

TRADE : FITTER-Sr.

MONTHLY TEST : WEEK NO. 33 TO 36

DATE :

SEAT NO :

TOTAL MARKS : 100 TIME : 2 Hrs. PAPER-I

TRADE CODE : 453

Note : Attempt all the questions. All questions carry equal marks

1. Which parameter is specifies to design hydromotor?

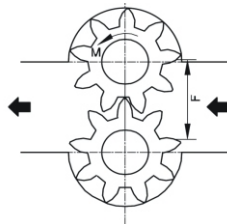
- A) Maximum operating pressure
- B) Maximum oil saving method
- C) Maximum piston size
- D) Maximum cylinder size

2. How many types of Hydromotors?

- A) 4 type
- B) 3 type
- C) 5 type
- D) 2 type

3. What is type of hydromotor?

- A) Gear type
- B) Valve type
- C) Piston type
- D) Propeller type



4. In bolted joints what is used to increase the frictional grip ?

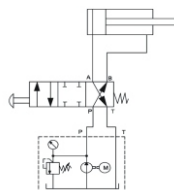
- A) Wire Lock
- B) Washer
- C) Lug
- D) Slotted nut

5. What is the property of the lubricant that the vapour is given off from the oil?

- A) Viscosity
- B) Fire point
- C) Pour point
- D) Flash point

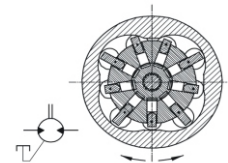
6. What is the name of the circuit diagram?

- A) 2/2 way valve
- B) 3/2 way valve
- C) 4/2 way valve
- D) 4/3 way valve



7. What is the name of the motor?

- A) Gear type of motor
- B) Vane type motor
- C) Axial piston motor
- D) Radial piston motor



8. Which valve block flow in one direction and allow free flow in the other direction?

- A) Non- return valve
- B) 4/2 way valve
- C) Gate valve
- D) Globe valve

9. How direction control valves are classified?

- A) Number of parts and position
- B) Direction of flow
- C) Maximum pressure of valve
- D) Direction of pressure

10. In bolted joints what is used to distribute load over larger area ?

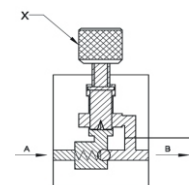
- A) Wire Lock
- B) Washer
- C) Lug
- D) Slotted nut

11. Which system the wick feed lubrication is catagorised?

- A) Hand feed
- B) Force feed
- C) Splash feed
- D) Gravity feed

12. What is the name of the part marked 'X' in one way flow control valve?

- A) Throttling screw
- B) Notch
- C) Opening of spring ball
- D) Valve set



13. What is the purpose of direction control valve in hydraulic system?

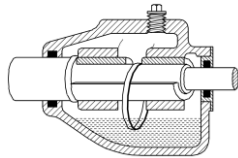
- A) Open or close
- B) Increase the pressure
- C) Decrease the pressure
- D) Control the valve

14. What is the meaning of numerical in 4/2 valve ?

- A) 4 Position, 2 Way
- B) 4 Way, 2 Position
- C) Both A and B
- D) None of Both A and B

15. What is the system of lubrication?

- A) Wick feed
- B) Ring oiling
- C) Splash system
- D) Manual screw down system



16. Which property states that the temperature of the lubricant is able to flow freely while poured?

- A) Oiliness
- B) Fire point
- C) Pour point
- D) Flash point

17. Punched washer are used in -----.

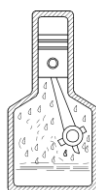
- A) Structural Fabrication work
- B) Assemblies using machined components
- C) Assemblies with flat surfaces
- D) Structural Assemblies with tapered surfaces

18. What is the ratio of solubel oil added to water to get non corrosive effect?

- A) 1:05
- B) 1:10
- C) 1:15
- D) 1:20

19. What is the name of lubrication system?

- A) Wick feed
- B) Ring oiling
- C) Gravity feed
- D) Splash lubricating



20. Why hydraulic system failure causes more than 90%?

- A) Contamination of hydraulic fluid
- B) Leak of valve
- C) Pump
- D) Electric Power

21. Which one of the following is low torque high speed motor ?

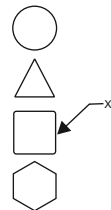
- A) Radial Piston
- B) Axial Piston
- C) Bent Axis
- D) Gear Motor

22. What is the flash point of general purpose machinery oil?

- A) 160°C
- B) 196°C
- C) 210°C
- D) 204°C

23. Name the symbol marked as 'X'.

- A) Daily
- B) Weekly
- C) Monthly
- D) Scheduled for frequency



24. Washer is used to prevent slackening of nut by vibration. Toothed washer do it by -----.

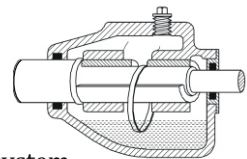
- A) Exerting friction on both contacting surfaces
- B) Creating tension between bolt and nut
- C) Creating compression between both contacting surfaces
- D) Decreasing friction between bolt and nut

25. What is the purpose of using lubricant?

- A) Prevent wear
- B) Increases friction
- C) Increases the loading capacity
- D) Increases the speed of moving elements

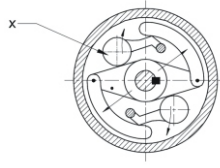
26. What is the method of lubrication?

- A) Wick feed
- B) Ring Oiling
- C) Splash system
- D) Manual screw down system



27. What is the name of the part marked as 'X'?

- A) Inner piece
- B) Outer piece
- C) Rubbing surface
- D) Centrifugal weight



28. Which one of the following metals no cutting oil is used while drilling ?

- A) Copper
- B) Aluminium
- C) Tool Steel
- D) Grey Cast Iron

29. Blended oils or compounded oils are used on automatic lathe because -----.

- A) It Has High Flash Point
- B) It has Low Fire Point
- C) It has More Fluidity
- D) All the above

30. Which among the following cutting fluid is used for hand sawing on steel ?

- A) Grease
- B) Kerosene
- C) Lard Oil
- D) Cutting Oil

31. Which washer is used for locking the nut ?

- A) Machined Washer
- B) Tapered Washer
- C) Spring Washer
- D) Tab Washer

32. The use of material working fluid is -----.

- A) Increase the Tool Life
- B) Produce better Surface Finish
- C) Prevent Rise in Temperature
- D) All of these

33. Which among the following oils are not recommended for use in food processing units ?

- A) Servomesh Gear Oil
- B) Lubrex Oil
- C) Grease
- D) None of the above

34. Which coolant oil is emulsified with water?

- A) Soluble oil
- B) Kerosene
- C) Mineral oil
- D) Lard oil

35. While machining cast iron, the coolant should be used -----.

- A) Dry Air
- B) Machine Oil
- C) Soft Water
- D) Kerosene

36. Lubricant is essential for -----.

- A) To rotate the Machine Speedly
- B) To stop the Machine Quickly
- C) To provide High Accuracy in the Job
- D) To rotate the Machine smoothly under maximum Load

37. Soluble oil is mixed with water in the ratio of -----.

- A) 1 : 10
- B) 1 : 20
- C) 1 : 30
- D) 1 : 40

38. Which washer help the bolt head or nut to seat square to the hole ?

- A) Machined Washer B) Tapered Washer
- C) Spring Washer D) Tab Washer

39. Which among the following cutting fluids are identified as 'Fatty Oils' ?

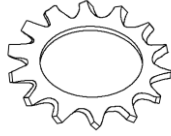
- A) Synthetic Oil/ Chemical Compound
- B) Soluble Oil
- C) Lard Oil and Vegetable Oil
- D) Straight Mineral Oils

40. Most common type of cutting fluid used in almost all the machining operation is -----.

- A) Lard Oil
- B) Compressed Air
- C) Soluble Oil
- D) Water

41. What is the name of tooth type lock washer?

- A) Internal type
- B) External type
- C) Counter sink type
- D) Internal and external type



42. Which type of lock washer used with flat or oval type head screw?

- A) External type
- B) Internal type
- C) Counter sunk type
- D) Internal and external type

43. Washers are generally specified by -----.

- A) Thickness
- B) Outer Diameter
- C) Centre Hole Diameter
- D) Mean Diameter

44. Which washer is employed for fastening of parts having taper surfaces ?

- A) Chamfered Plain Washer
- B) Tab Washer
- C) Taper Washer
- D) Lock Washer With Lugs

45. Plain or flat washer are used in -----.

- A) Structural Fabrication Work
- B) Assemblies using machined components
- C) Assemblies with flat surfaces
- D) Structural Assemblies with tapered surfaces

46. Which spring suitable for high loads in limited space for washer?

- A) Flat spring
- B) Wire spring
- C) Conical spring
- D) Compressive spring

47. The contact area between job surface and nut is increased by using washer means -----.

- A) Gap
- B) Frictional Grip
- C) Locking
- D) None of these

48. Which among the following washer is also named as multi tab washer ?

- A) Toothed Lock Washer B) Tab Washer
- C) Taper Washer D) Plain Washer

49. In bolted joints what is used to avoid loosening of nut due to vibrations ?

- A) Square Headed nut
- B) Washer
- C) Teflon Tape
- D) Stud

50. Which washer is used in structural assemblies of I-beams, channels etc ?

- A) Machined Washer
- B) Tapered Washer
- C) Spring Washer
- D) Tab Washer

SCAN ME



www.visionprakashan.com

Month -09

New Syllabus _2022

Sector : Capital Goods And Manufacturing
Annual Pattern 2nd Year NSQF Level- 4
INDUSTRIAL TRAINING INSTITUTE

9.1**TRADE : FITTER-Sr.****MONTHLY TEST : WEEK NO. 33 TO 36**DATE : **PAPER-I**TRADE CODE : **453****TOTAL MARKS : 100****ANSWER KEY****Note : Attempt all the questions. All questions carry equal marks**

Q.No.	ANS
1	A
2	B
3	A
4	C
5	D
6	C
7	D
8	A
9	A
10	B
11	D
12	A
13	A
14	B
15	B
16	C
17	A
18	D
19	D
20	A
21	D
22	A
23	C
24	A
25	A

Q.No.	ANS
26	B
27	D
28	D
29	C
30	D
31	D
32	D
33	A
34	A
35	A
36	D
37	B
38	B
39	C
40	C
41	B
42	C
43	C
44	C
45	C
46	C
47	B
48	A
49	B
50	C